

FLOODRE

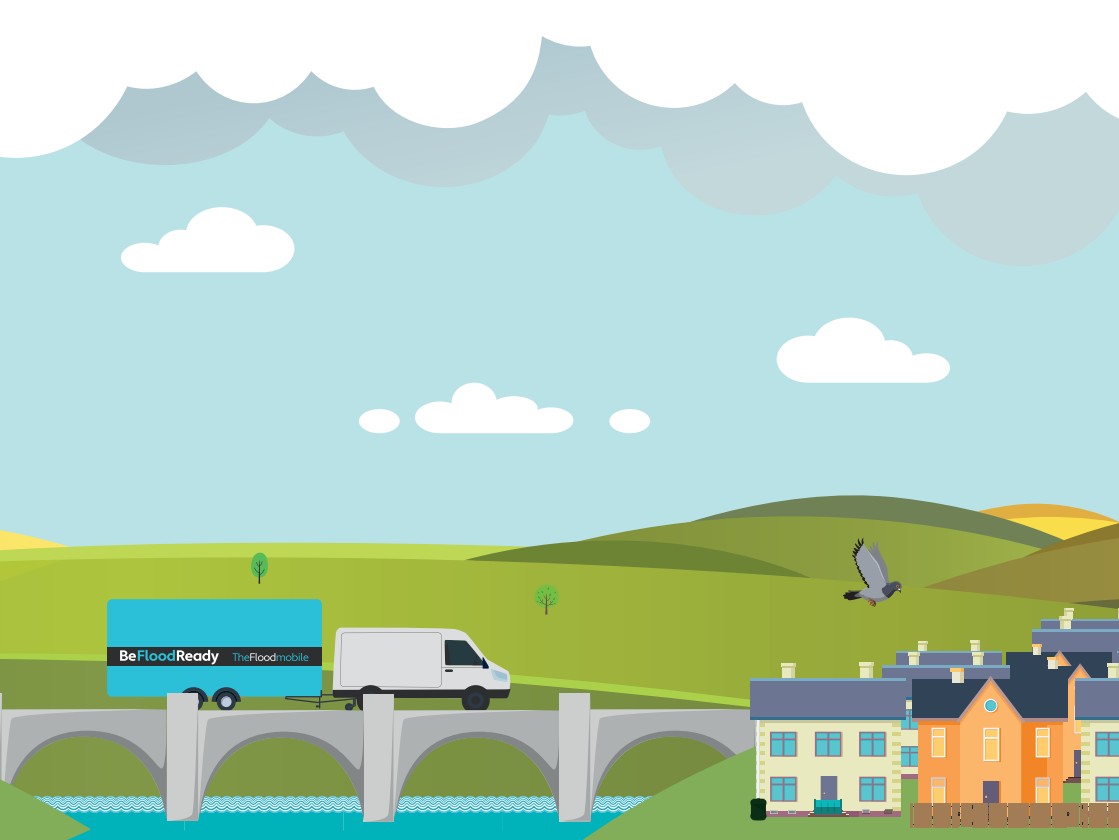
Emergency flood grab bag:

Find out more on Flood Mary's website:



- Copies of important documents e.g. Insurance policy / Passports / Wills / Deeds / Shares etc
- Photos and useful information on a USB stick
- Whistle
- Spare set of house & car keys
- Essential hygiene items
- Cash / bank card
- Prescription for essential medication
- Antibacterial gel
- First Aid Kit
- Spare lead for pet
- FM Pocket radio / batteries
- Change of warm clothing if space permits





Emergency kit:

- Water (3 litres) for each person in your household (it will be safe to drink for 12 months)
- Long life food / cans / packets / cereal bars / chocolate bars
- Portable camping stove & gas refills / old saucepan
- Lighter
- Rechargeable camping lights
- Wind-up multi function radio or portable FM radio
- LED Head torch / lantern
- Children's toys / games
- Spare batteries for kit above
- Fleece blankets
- Hygiene items
- Old analogue dial phone
- Hearing aid batteries
- Copy of this emergency plan on top!